



USER GUIDE

USING FRAMINGS IN VAULT PLATFORM v4.0

DOCUMENT VERSION 06.06.16



Introduction to Using Framings in Vault Platform 4.0 for Mac OS X

Disclaimer

Codex products are continually developed to remain at the forefront of the industry, and as such the information in this guide is subject to change without notice. Whilst Codex endeavours to ensure that all documentation provided is correct at the time of writing, this document is not guaranteed to be error-free.

Codex does not assume responsibility for issues or losses due to misinterpretation of the information in this document, errors in this document, or incorrect configuration or installation of the equipment described herein.

This document is issued in conjunction with the software to be used as per the conditions of the associated beta agreement.

Please report any errors found in this document to **support@codex.online**

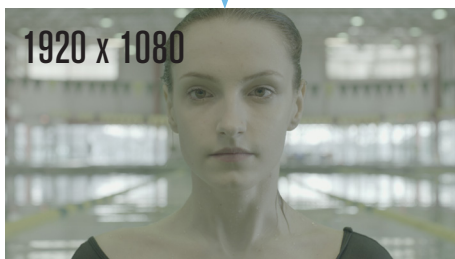
Apertures Example 1: Open Gate and 4:3 ALEXA to 16:9, 1920 x 1080 output full frame



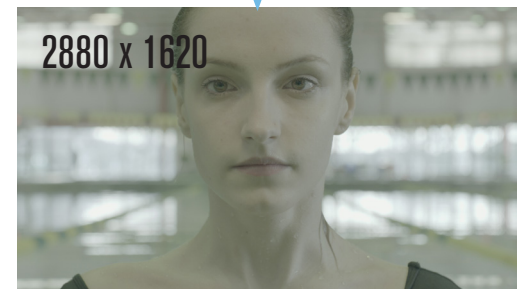
Set Source Aperture
Vault Platform Library->
Metadata Panel->
Edit Metadata->
Set Source Aperture->
16:9



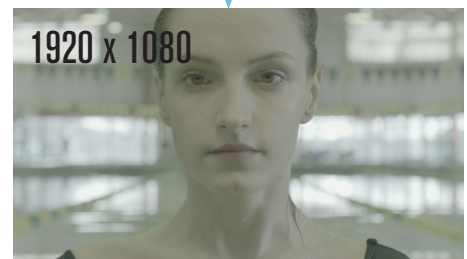
Start Job to Generate files
Deliverable has
Destination Aperture:
HD-> HD (16:9)



Set Source Aperture
Vault Platform Library->
Metadata Panel->
Edit Metadata->
Set Source Aperture->
16:9



Start Job to Generate files
Deliverable has
Destination Aperture:
HD-> HD (16:9)



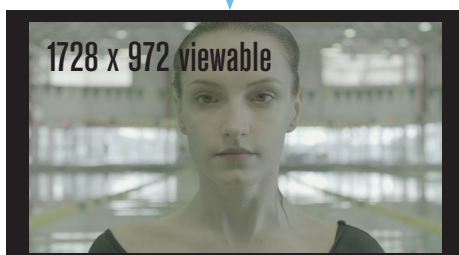
Apertures Example 2: Open Gate and 4:3 ALEXA to 16:9, 1920 x 1080 output, source region @ 90% of output



Set Source Aperture
Vault Platform Library->
Metadata Panel->
Edit Metadata->
Set Source Aperture->
16:9



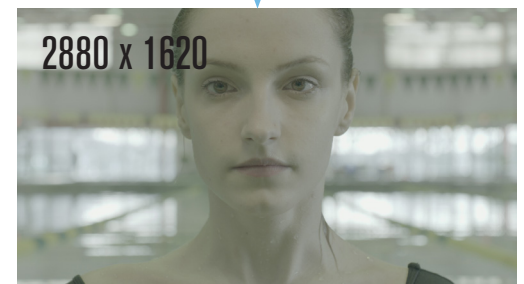
Start Job to Generate files
Deliverable has
Destination Aperture:
HD-> HD (16:9) – 90% safe



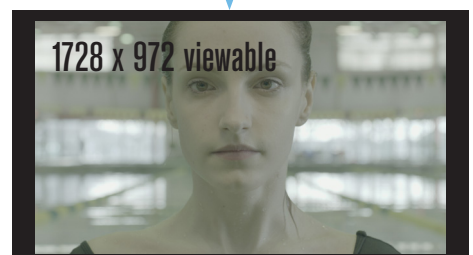
1920 x 1080 total size



Set Source Aperture
Vault Platform Library->
Metadata Panel->
Edit Metadata->
Set Source Aperture->
16:9



Start Job to Generate files
Deliverable has
Destination Aperture:
HD-> HD (16:9) – 90% safe

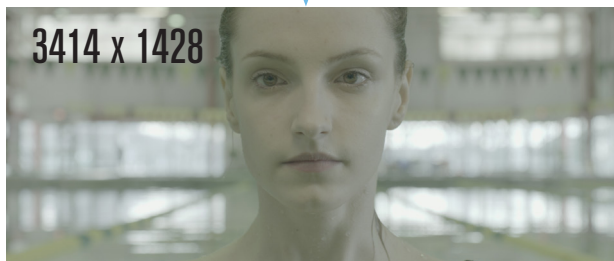


1920 x 1080 total size

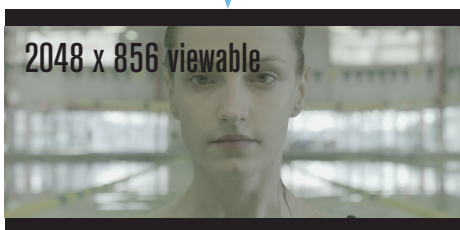
Apertures Example 3: Open Gate and 4:3 ALEXA to 2.39, 2048 x 1080 output, full frame



Set Source Aperture
Vault Platform Library->
Metadata Panel->
Edit Metadata->
Set Source Aperture->
DCI Scope 2.39



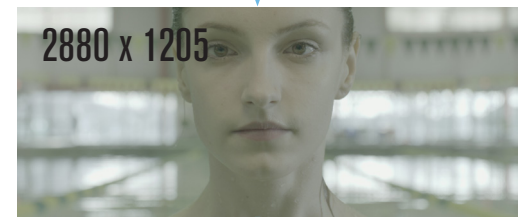
Start Job to Generate files
Deliverable has
Destination Aperture:
2K DCI



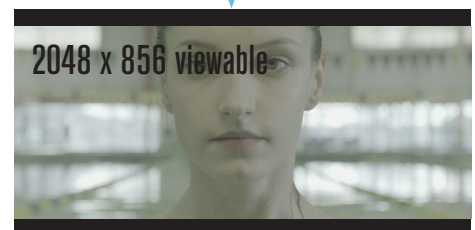
2048 x 1080 total size



Set Source Aperture
Vault Platform Library->
Metadata Panel->
Edit Metadata->
Set Source Aperture->
DCI Scope 2.39



Start Job to Generate files
Deliverable has
Destination Aperture:
2K DCI

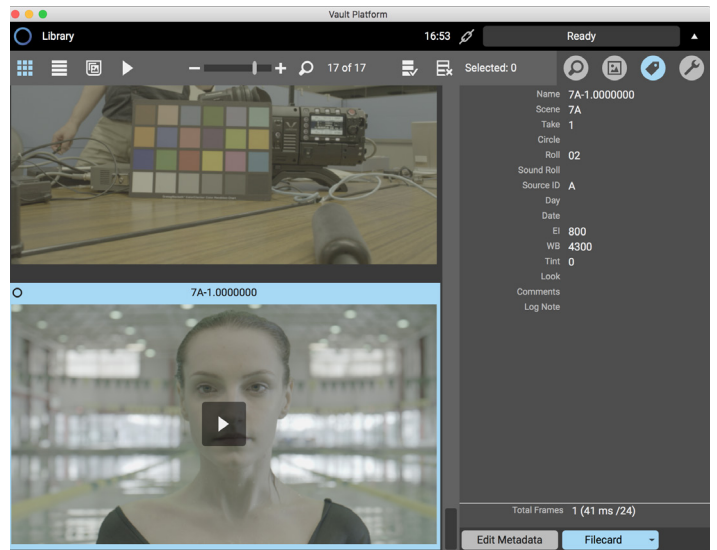


2048 x 1080 total size

Setting a Source Aperture

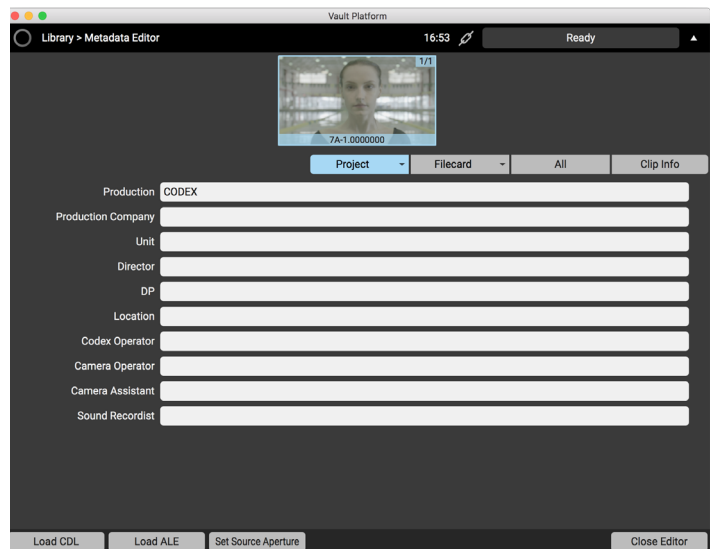
Step 1

- Select Clip in the Library
- Open the Metadata Panel
- Click **Edit Metadata**



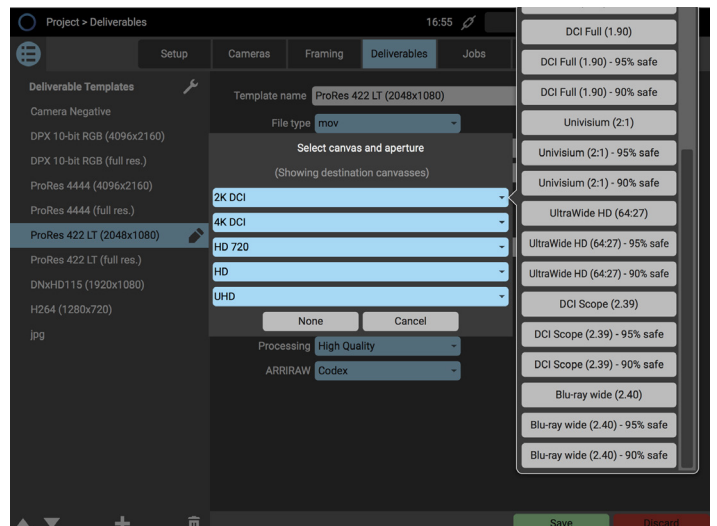
Step 2

- Click **Edit All** if working with more than one clip
- Click **Set Source Aperture**



Step 3

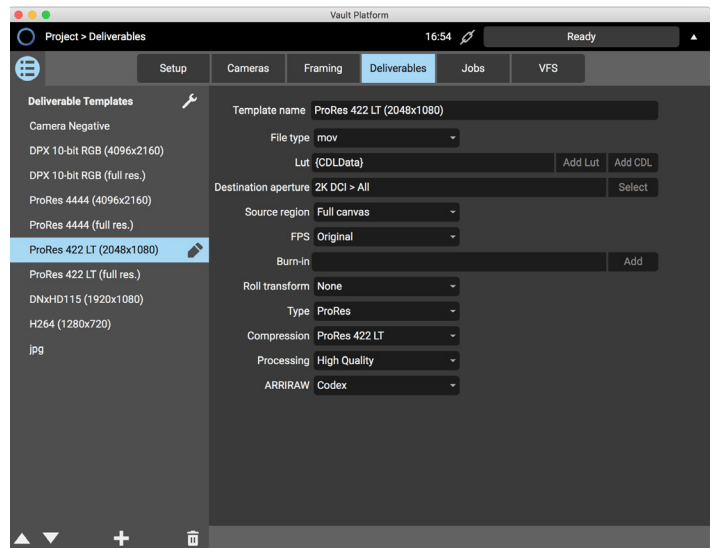
- Select aperture to apply from list



Setting a Destination Aperture

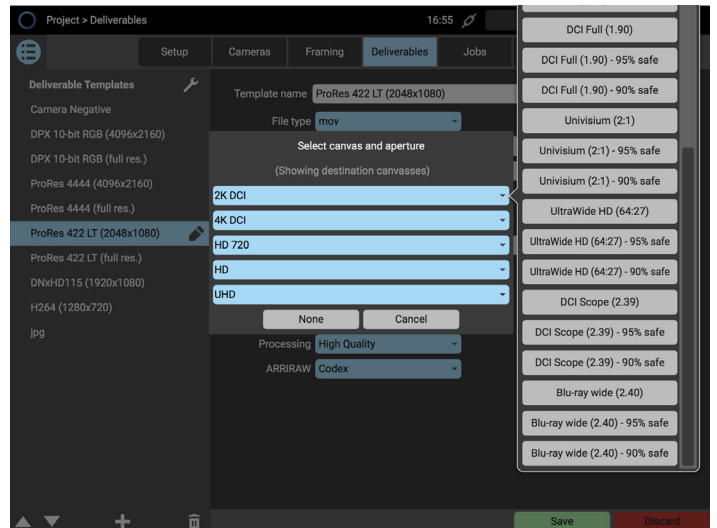
Step 1

- Go to Project->Deliverables
- Select Deliverable
- Click edit (pencil) icon
- Click Destination Aperture->Select



Step 2

- Select aperture from list



Step 3

- Save Changes
- Use Deliverable as part of a Job to create files

