



TECHNICAL BULLETIN

CODEX PLATFORM WITH DEVICE MANAGER 5.1.0beta3-05415 INSTALLATION GUIDE macOS

26 FEBRUARY 2020



Disclaimer

Codex products are continually developed to remain at the forefront of the industry, and as such the information in this guide is subject to change without notice. Whilst Codex endeavour to ensure that all documentation provided is correct at the time of writing, this document is not guaranteed to be error-free.

Codex does not assume responsibility for issues or losses due to misinterpretation of the information in this document, errors in this document, or incorrect configuration or installation of the equipment described herein.

Please report any errors found in this document to **support@codex.online**

1. Introduction

Codex Platform with Device Manager provides a simplified workflow for Codex Capture Drives and Docks, Compact Drives and Readers.

Codex Platform provides a common set of background services that power all Codex software products, including Device Manager.

Device Manager is a menu bar app that provides essential controls for your Dock, and integrates with the Desktop and Finder to directly present the contents of your Capture Drive or Compact Drive including for HDE workflows.

Codex Platform with Device Manager is available from **<https://codex.online/software>**

2. System requirements

- Mac computer (Mac Pro, iMac Pro, MacBook Pro, or Mac Mini) running macOS 10.13 or 10.14 (minimum version 10.13 for Capture Drives and 10.14.4 for Compact Drives) or 10.15.
- 300MB disk space for Codex Platform with Device Manager.
- Codex Capture Drive Dock or Compact Drive Reader.
- If using Capture Drive Dock (SAS), an ATTO H680 or H6F0 card is required along with the ATTO SAS driver for OS X.

3. Prerequisites

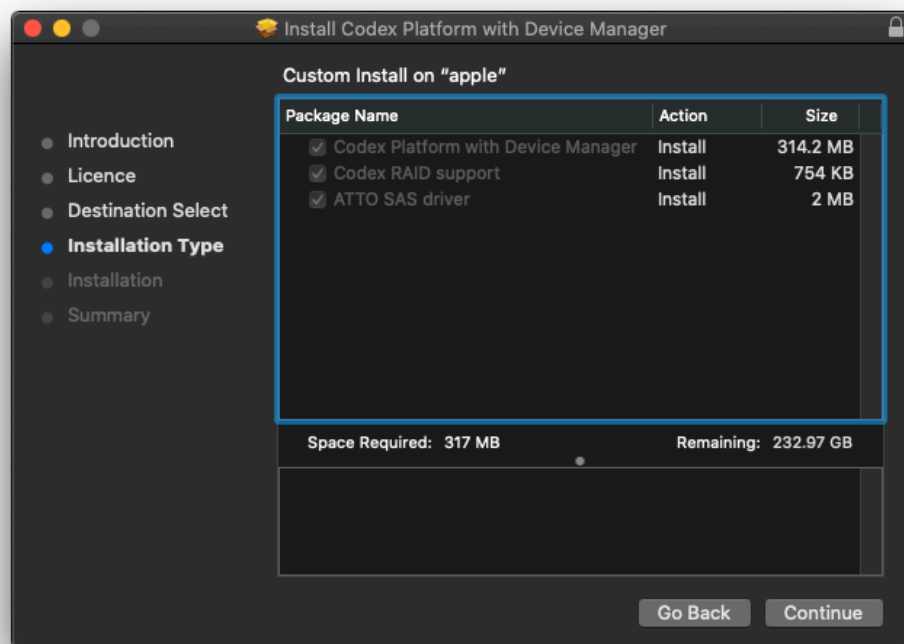
Prior to installation of this BETA version of Codex Platform and Device Manager it is recommended to:

- Ensure that all available macOS updates have been installed.
- Ensure that a Time Machine backup of the Mac is available in the event that the system needs to be rolled back to the pre-installation state.

4. Installation

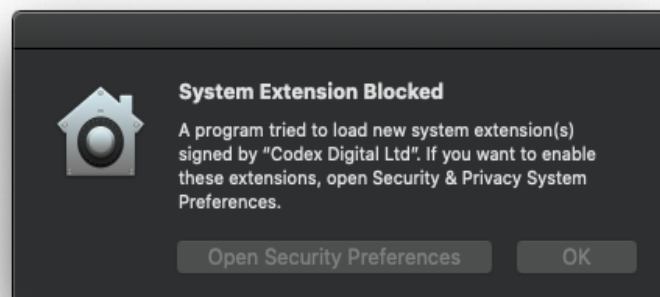
The steps below must be completed in order for the Codex Platform and Device Manager software to function correctly.

1. Open the downloaded file vault-5.1.0beta3-05415-codexplatform.pkg. Follow the installer prompts to proceed with software installation.
2. The items 'Codex Platform with Device Manager', 'Codex RAID support', and 'ATTO SAS driver' will be selected by default:

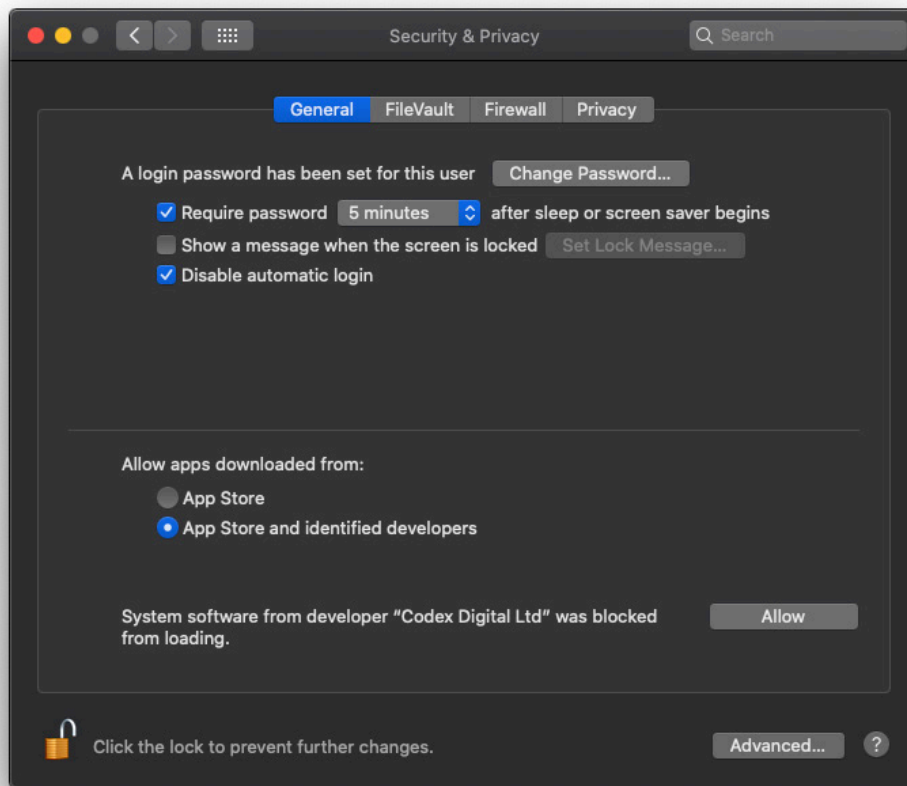


The Installer now includes the commercially licensed X2XFUSE in place of the previous FUSE for macOS. X2XFUSE is a core dependency of the Codex software and therefore is installed automatically, and does not appear in the Installer dialogue or in System Preferences. X2XFUSE is used exclusively by the Codex software - if you have other applications that depend on FUSE for macOS then this should be installed separately.

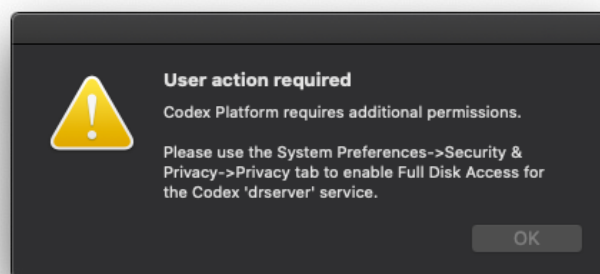
3. For new installations you will be prompted to open Security & Privacy System Preferences to allow the software to run:



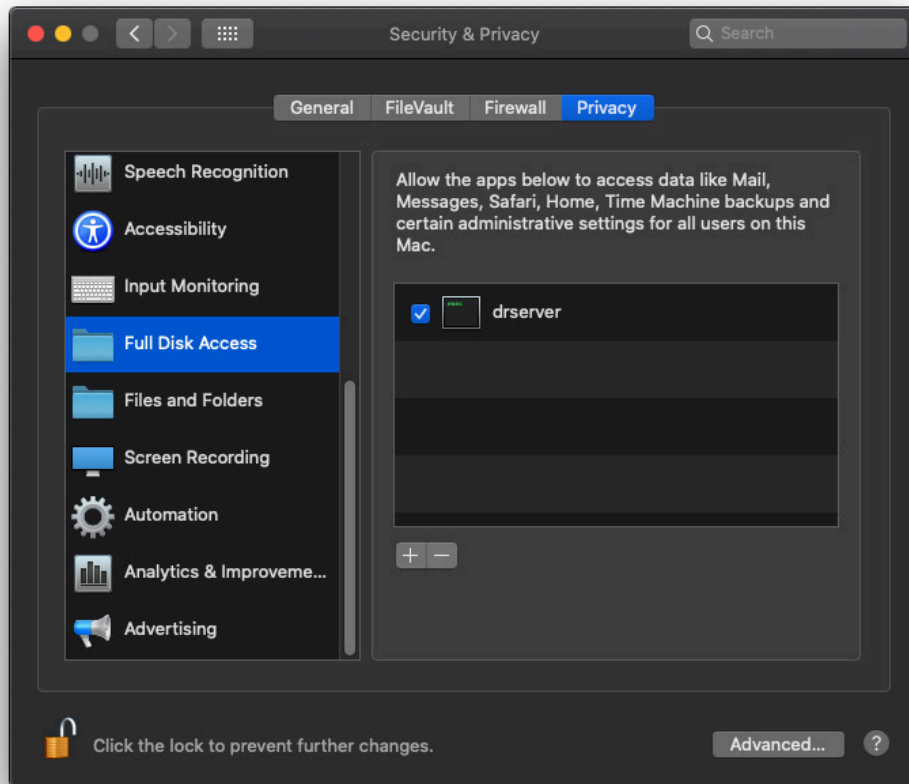
Click 'Open Security Preferences' to access System Preferences > Security & Privacy, then click the padlock and enter your password, before clicking Allow:



4. When the installation completes you will be prompted to reboot the Mac. After rebooting the following dialogue will be shown on macOS Catalina:



Open System Preferences > Security & Privacy > Privacy, click the padlock and enter your password, then scroll down to Full Disk Access and click the box for 'drserver':



Click the padlock again and then close the Security & Privacy window.

6. Device Manager is a menu bar app that is accessible at the top of your screen after installation.

7. If there are any issues with loading of media, confirm that the Codex Server is running from System Preferences > Codex.